

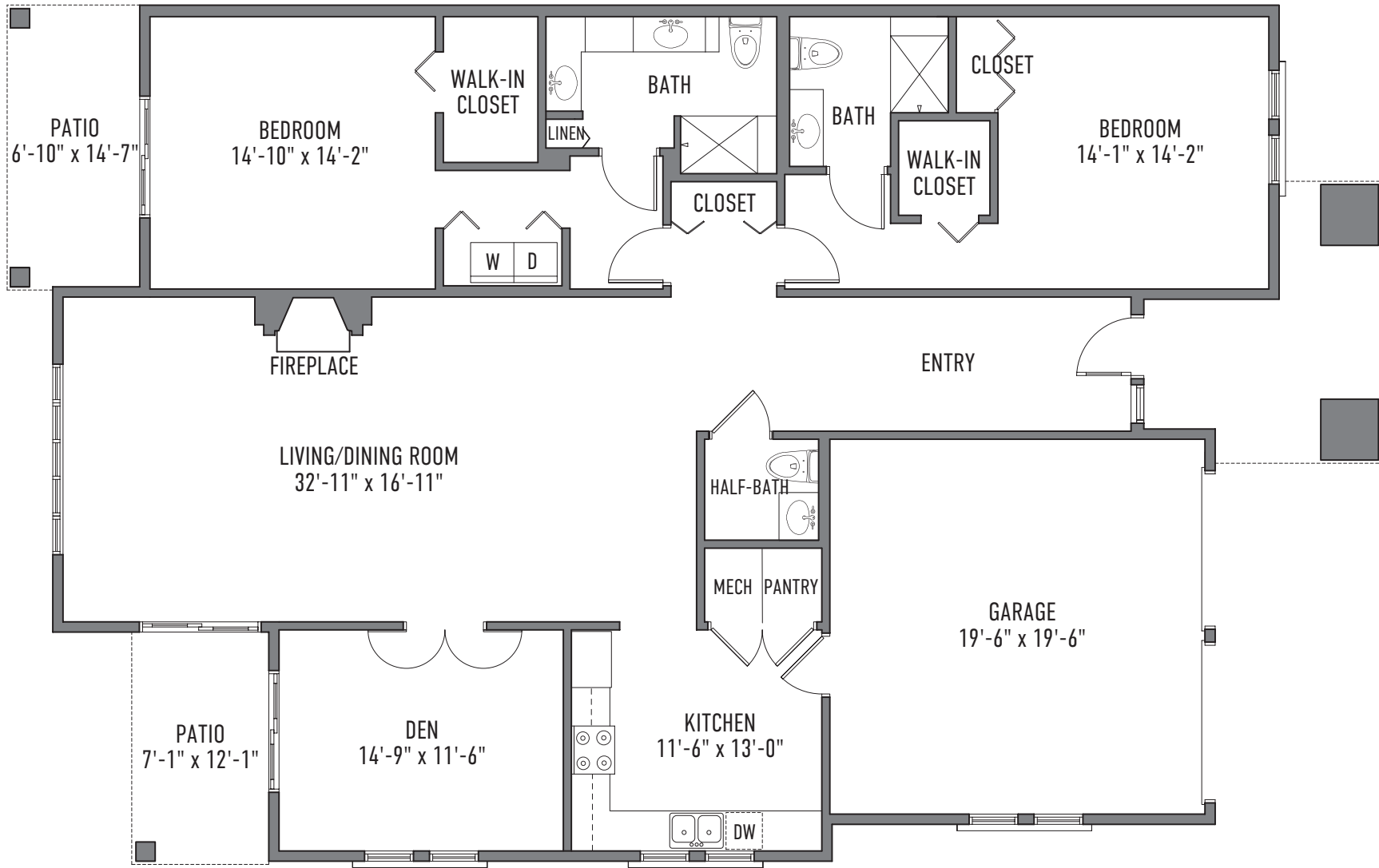
VERONA I

Two Bedroom + Den - Two and One-Half Bath - 2,005 Square Feet

13500 N. Rancho Vistoso Blvd., Tucson, AZ 85755 • (520) 878.2612

Plans and specifications are subject to change without notice. Areas are approximate.





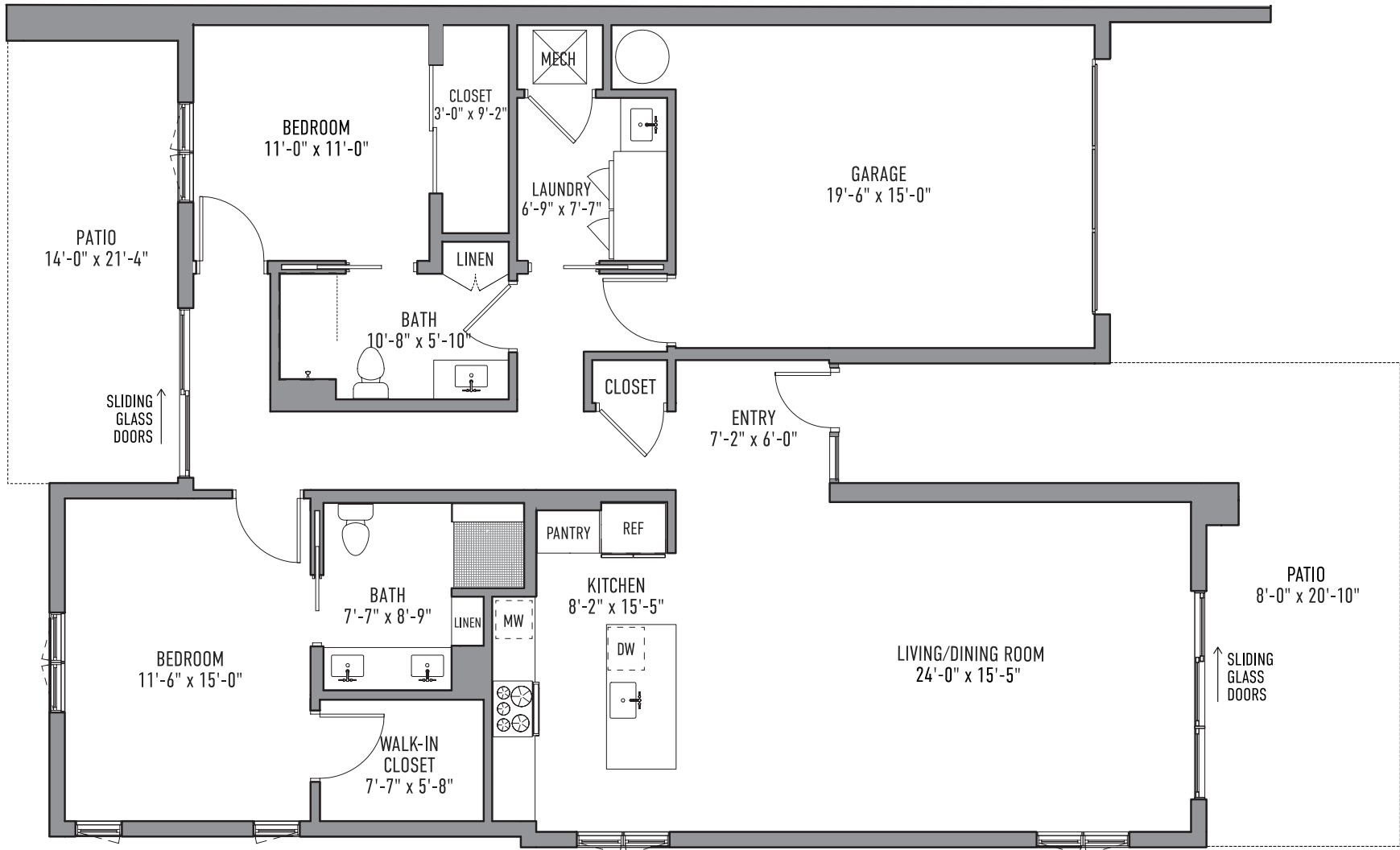
VERONA II

Two Bedroom + Den - Two and One-Half Bath - 2,049 Square Feet

13500 N. Rancho Vistoso Blvd., Tucson, AZ 85755 • (520) 878.2612

Plans and specifications are subject to change without notice. Areas are approximate.





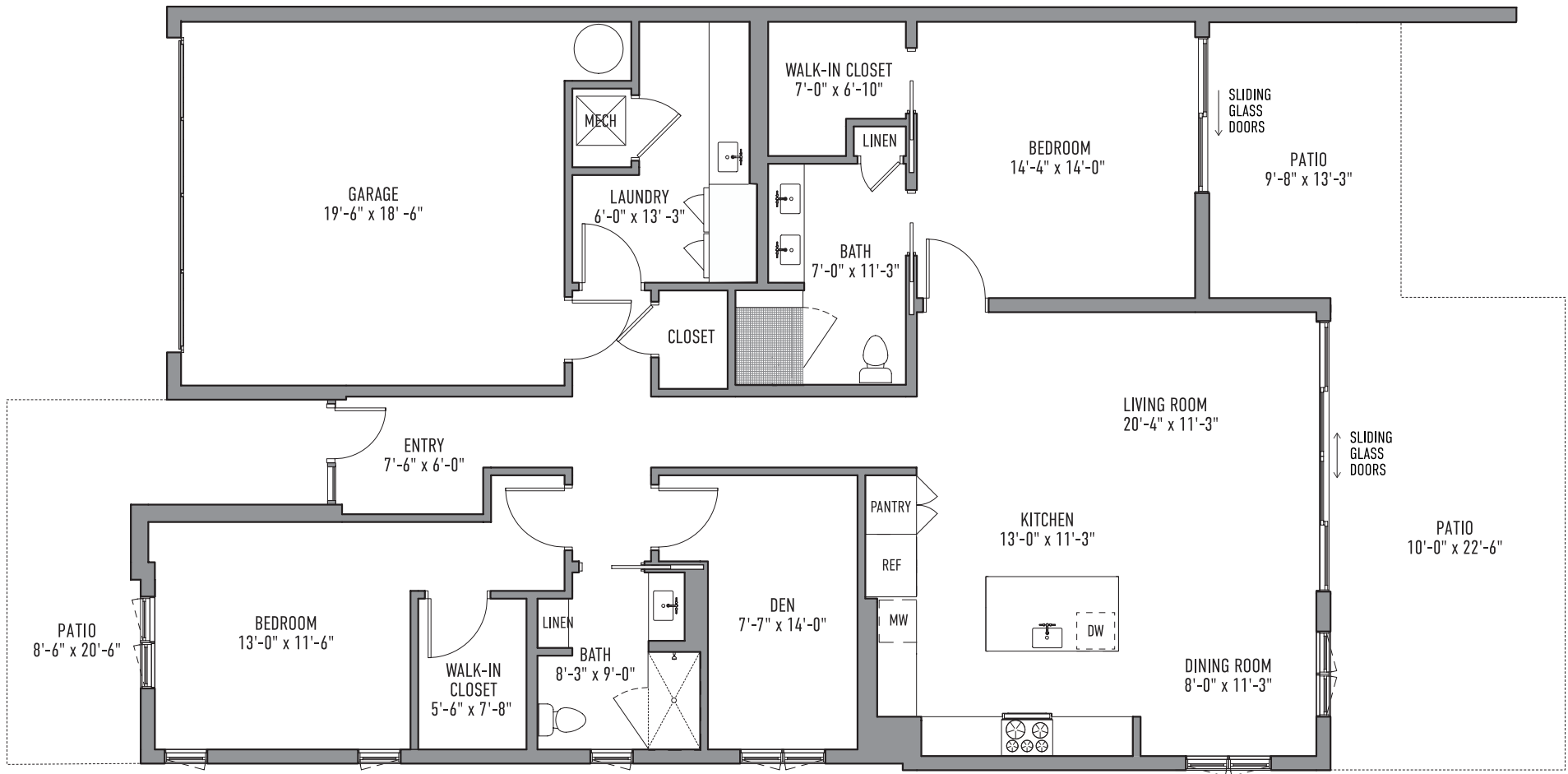
ORVIETO - NEW VILLA HOME

Two Bedroom - Two Bath - 1,456 Square Feet

13500 N. Rancho Vistoso Blvd., Tucson, AZ 85755 • (520) 878.2612

Plans and specifications are subject to change without notice. Areas are approximate.





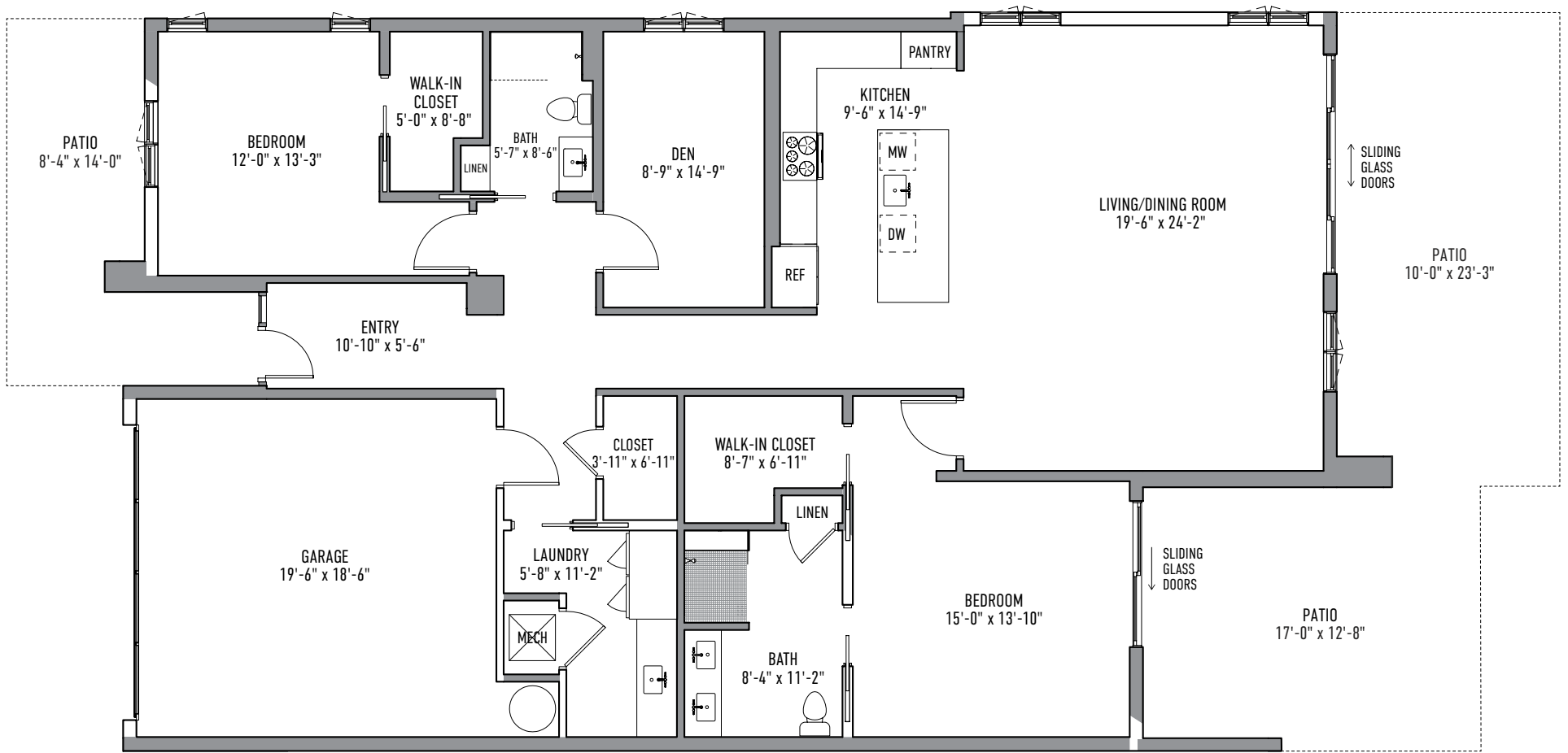
MONTALCINO – NEW VILLA HOME

Two Bedroom + Den - Two Bath - 1,751 Square Feet

13500 N. Rancho Vistoso Blvd., Tucson, AZ 85755 • (520) 878.2612

Plans and specifications are subject to change without notice. Areas are approximate.





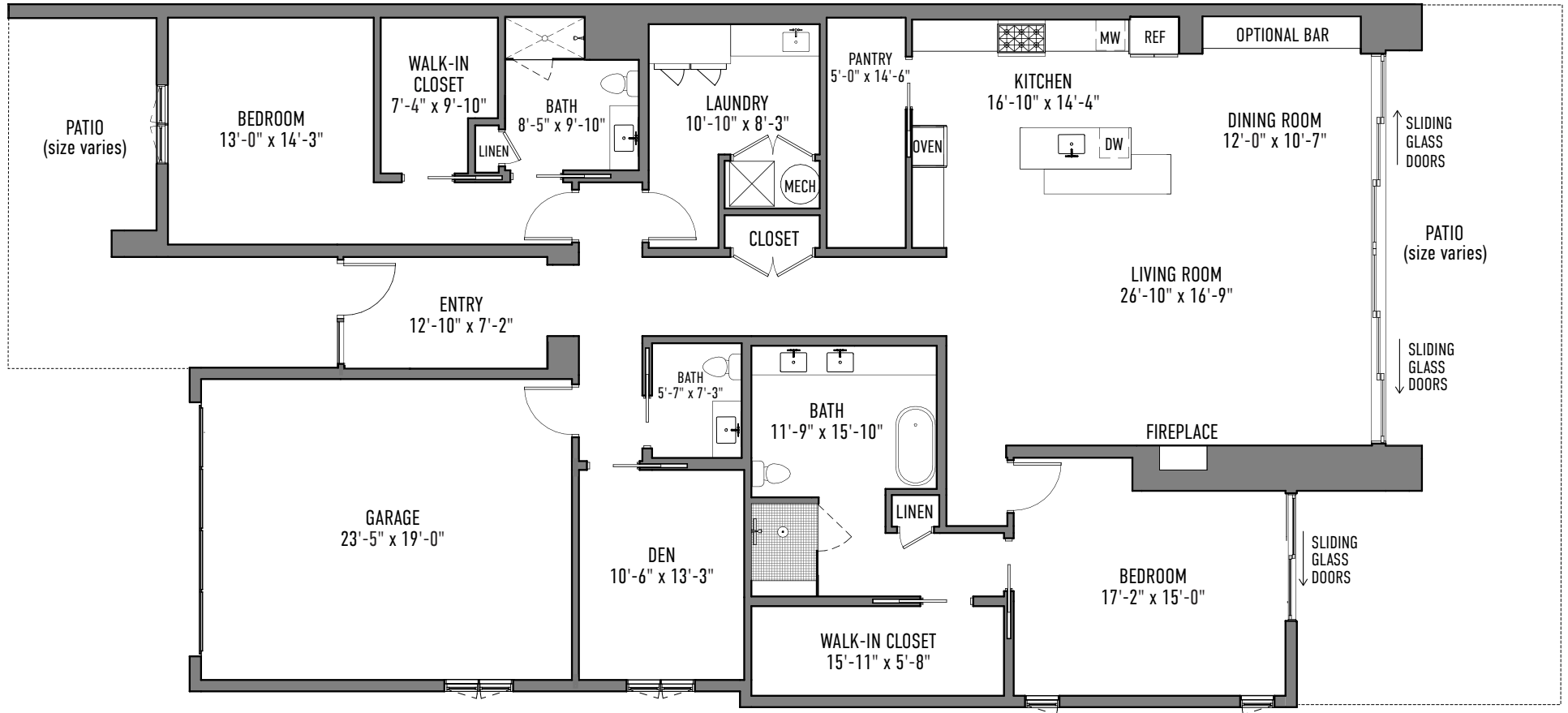
POSITANO – NEW VILLA HOME

Two Bedroom + Den - Two Bath - 2,000 Square Feet

13500 N. Rancho Vistoso Blvd., Tucson, AZ 85755 • (520) 878.2612

Plans and specifications are subject to change without notice. Areas are approximate.





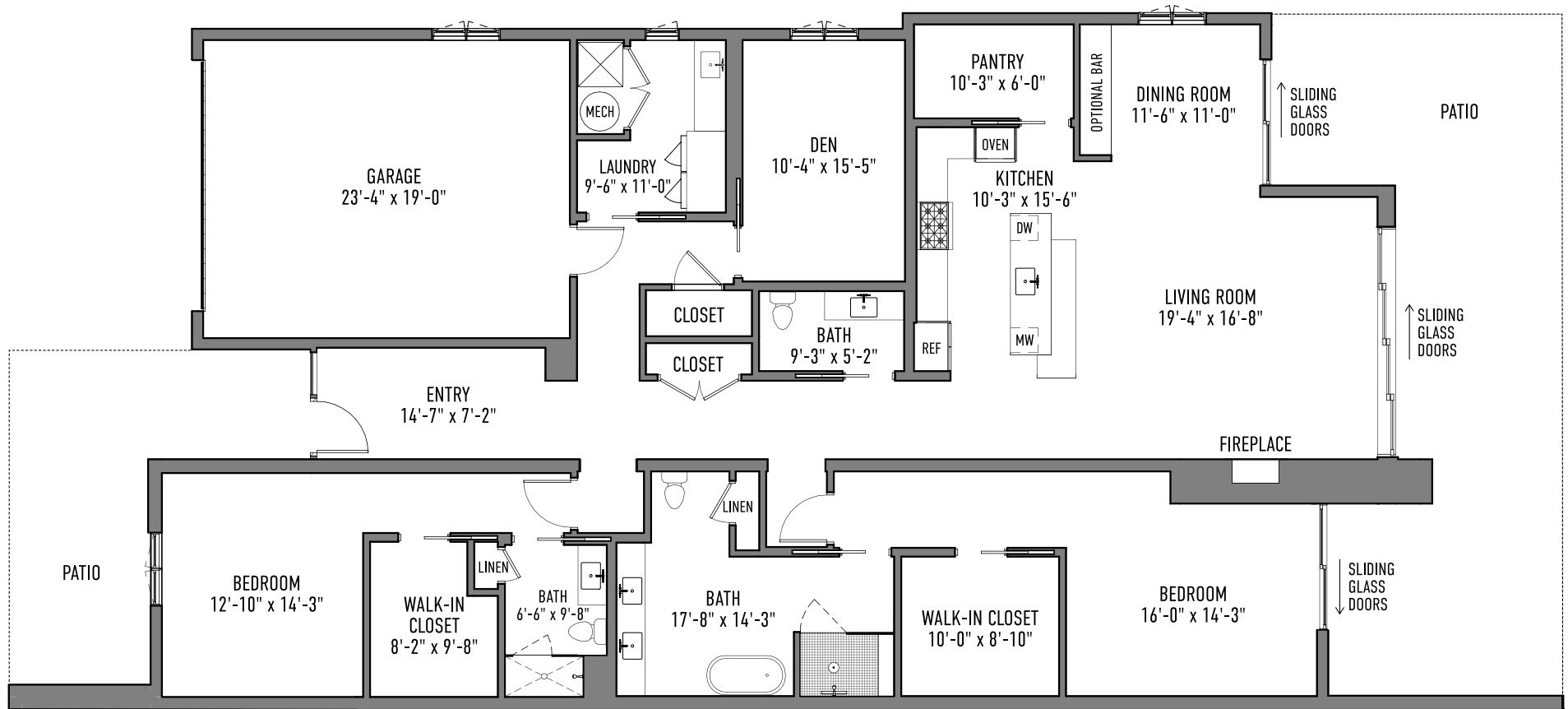
RAVELLO II - NEW VILLA HOME

Two Bedroom + Den - Two and One-Half Bath - 2,706 Square Feet

13500 N. Rancho Vistoso Blvd., Tucson, AZ 85755 • (520) 878.2612

Plans and specifications are subject to change without notice. Areas are approximate.





RAVELLO I - NEW VILLA HOME

Two Bedroom + Den - Two and One-Half Bath - 2,711 Square Feet

13500 N. Rancho Vistoso Blvd., Tucson, AZ 85755 • (520) 878.2612

Plans and specifications are subject to change without notice. Areas are approximate.

