

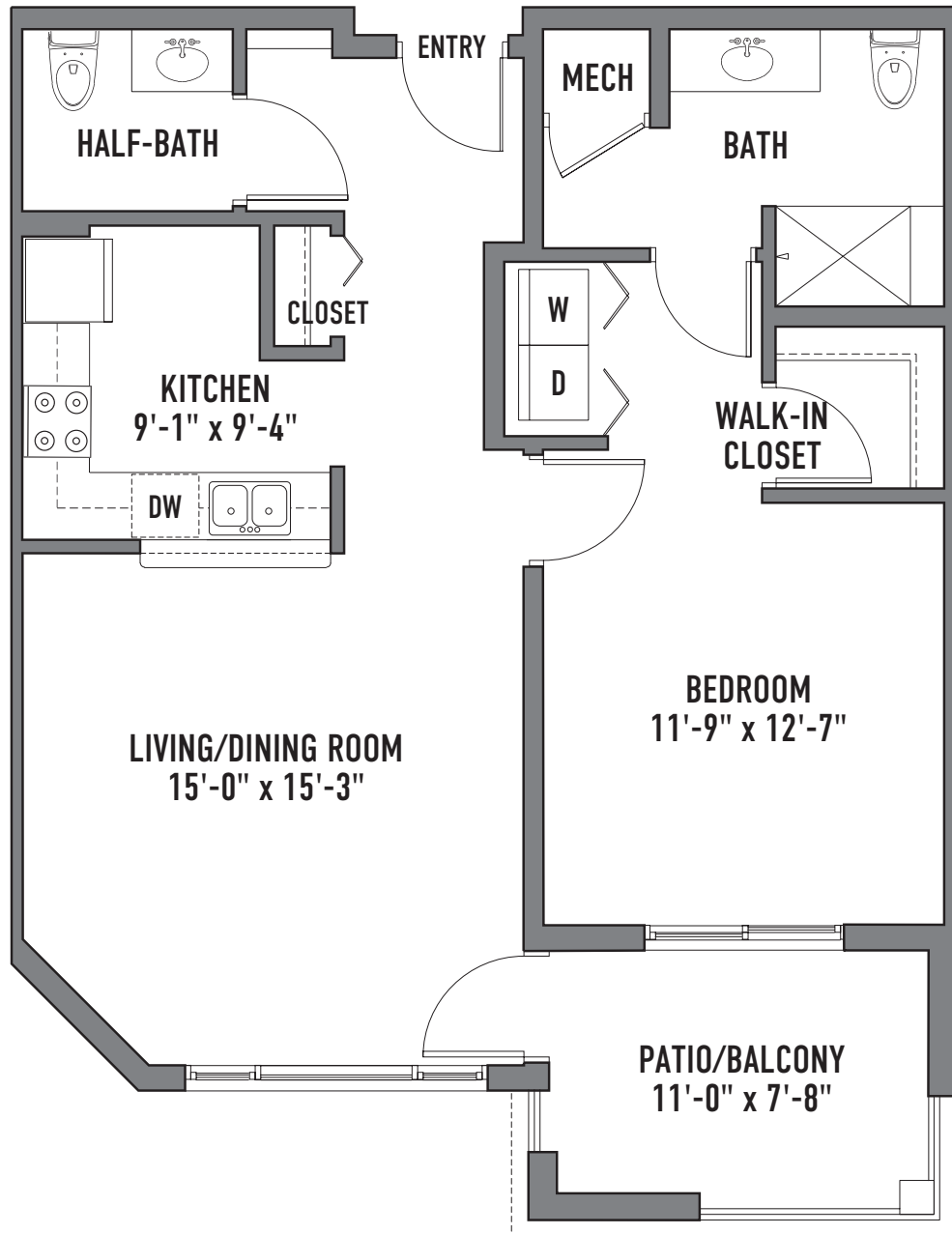
AMALFI II

One Bedroom - One Bath - 846 Square Feet

13500 N. Rancho Vistoso Blvd., Tucson, AZ 85755 • (520) 878.2612

Plans and specifications are subject to change without notice. Areas are approximate.





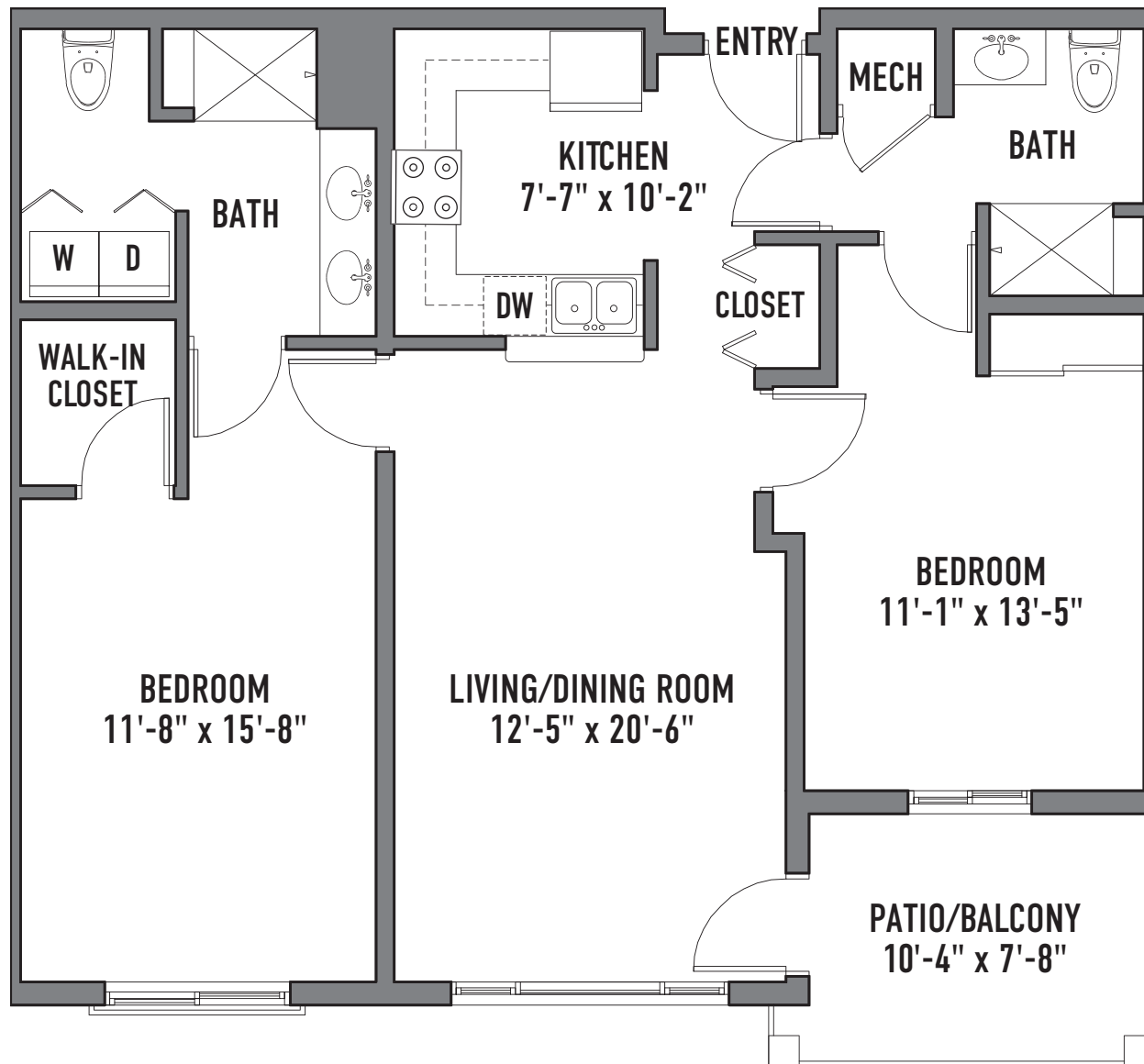
AMALFI IV

One Bedroom - One and One-Half Bath - 842 Square Feet

13500 N. Rancho Vistoso Blvd., Tucson, AZ 85755 • (520) 878.2612

Plans and specifications are subject to change without notice. Areas are approximate.





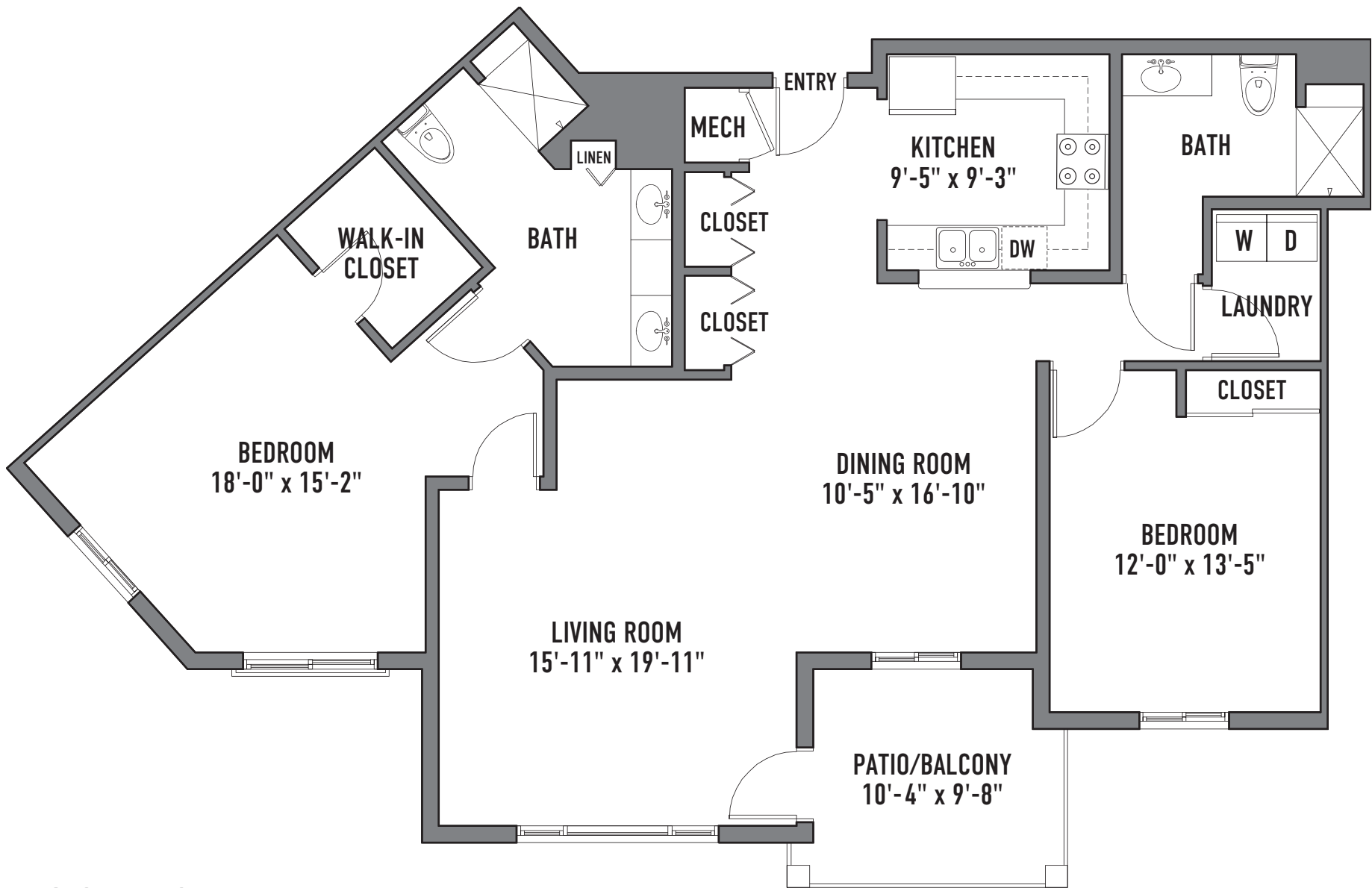
BAYONA II

Two Bedroom - Two Bath - 1,113 Square Feet

13500 N. Rancho Vistoso Blvd., Tucson, AZ 85755 • (520) 878.2612

Plans and specifications are subject to change without notice. Areas are approximate.





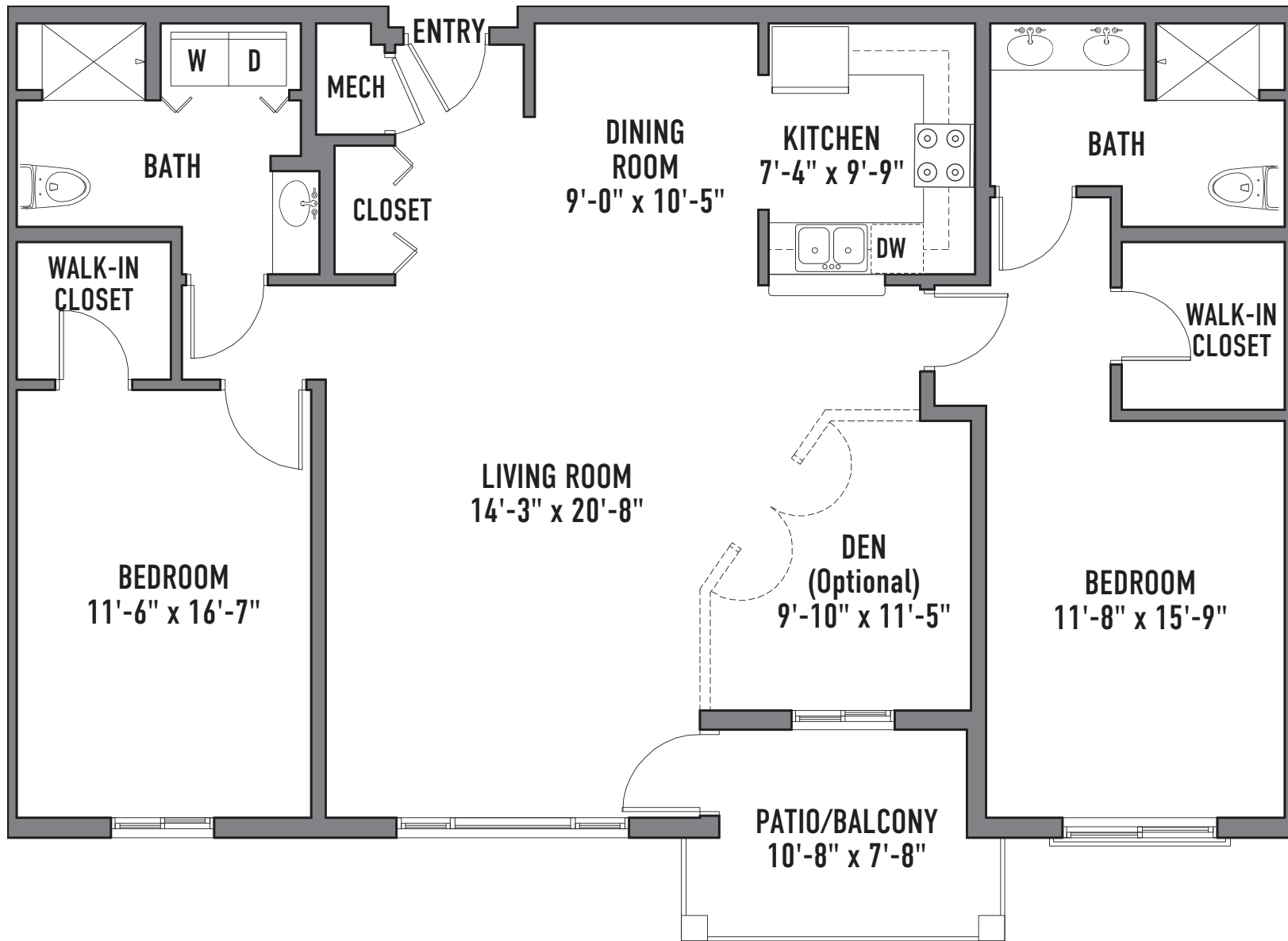
CORDOBA II

Two Bedroom - Two Bath - 1,568 Square Feet

13500 N. Rancho Vistoso Blvd., Tucson, AZ 85755 • (520) 878.2612

Plans and specifications are subject to change without notice. Areas are approximate.





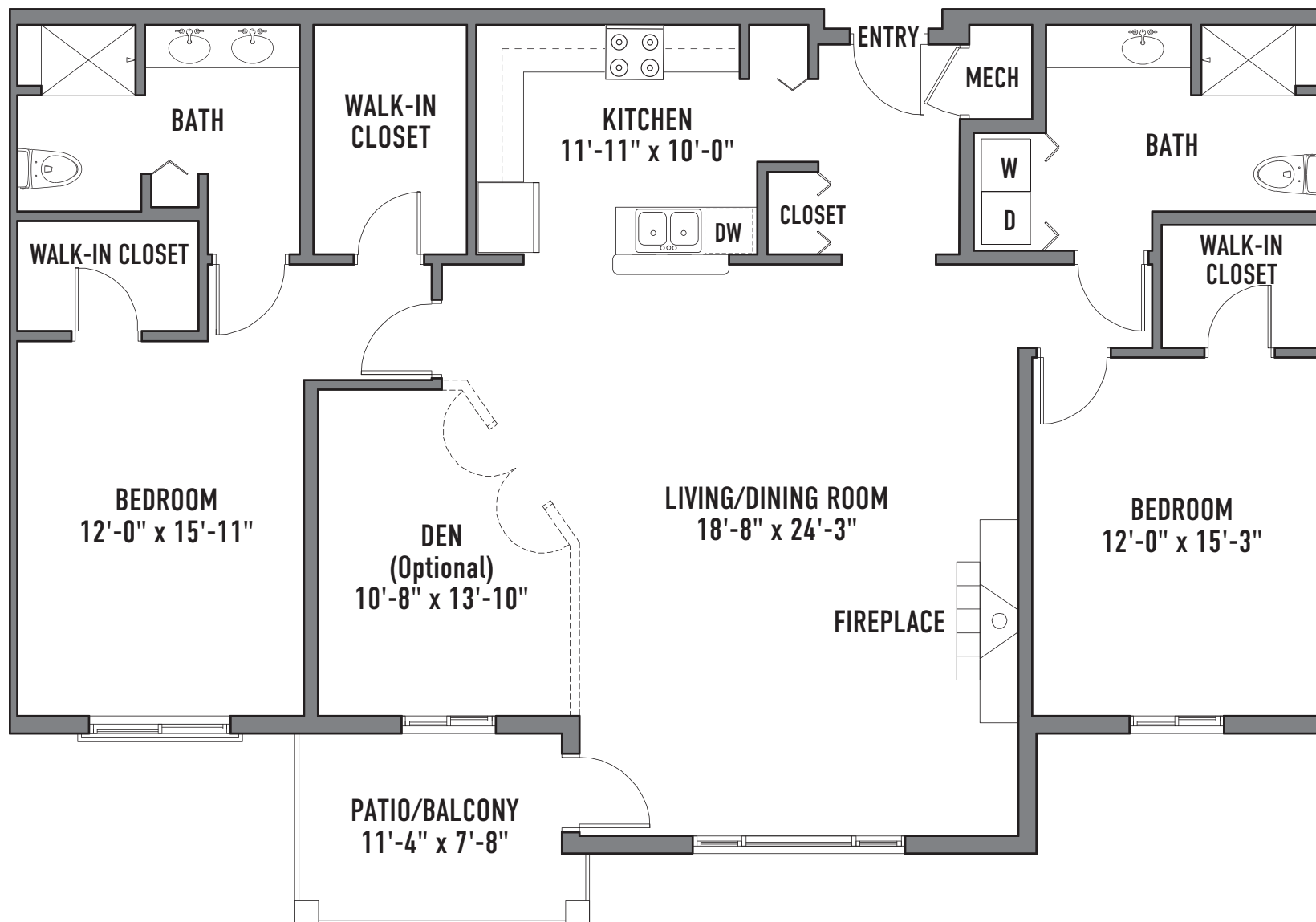
FIRENZE I

Two Bedroom + Den - Two Bath - 1,555 Square Feet

13500 N. Rancho Vistoso Blvd., Tucson, AZ 85755 • (520) 878.2612

Plans and specifications are subject to change without notice. Areas are approximate.





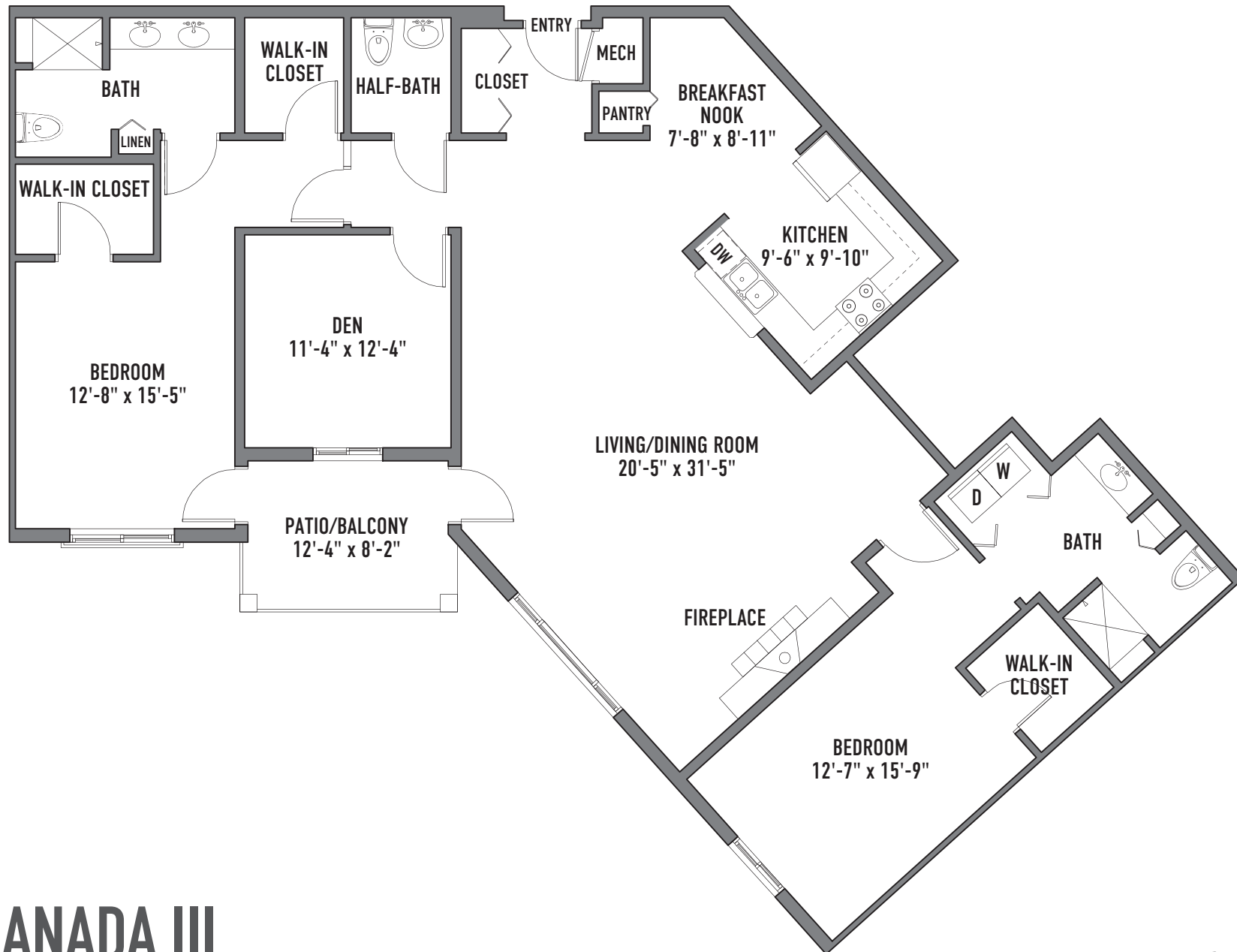
GRANADA I

Two Bedroom + Den - Two Bath - 1,807 Square Feet

13500 N. Rancho Vistoso Blvd., Tucson, AZ 85755 • (520) 878.2612

Plans and specifications are subject to change without notice. Areas are approximate.





GRANADA III

Two Bedroom + Den - Two and One-Half Bath - 2,103 Square Feet

13500 N. Rancho Vistoso Blvd., Tucson, AZ 85755 • (520) 878.2612

Plans and specifications are subject to change without notice. Areas are approximate.





PORTOFINO II

Three Bedroom + Den - Three Bath - 2,931 Square Feet

13500 N. Rancho Vistoso Blvd., Tucson, AZ 85755 • (520) 878.2612

Plans and specifications are subject to change without notice. Areas are approximate.

